

# Thorpeness Maintenance

## Thorpeness, Suffolk

### What are we updating you about?

Coastal Partnership East are the coastal management team for East Suffolk Council (ESC), North Norfolk District Council and Great Yarmouth Borough Council and are responsible for coastal management. We have appointed East Suffolk Water Management Board (ESWMB) to complete repairs and maintenance of coastal assets along the Suffolk coast, which are owned or managed by ESC. ESWMB will be completing works at Thorpeness as part of that contract.

### Where is this work happening?

A map of where the work is taking place is on the back of this factsheet. The work will take place on the beach north of Old Homes Road. There will be a temporary site compound in Thorpeness car park. A dumper and excavator for the geobag covering will be stored on the beach next to the boardwalk access and will be travelling along the beach to the work area.

### When are we doing the work?

Work is due to start from 15<sup>th</sup> July 2024 and last approximately 1 week, allowing our contractor to maximise work around daily tides. All work is subject to safe working conditions i.e. tide and weather condition dependent.

### What will we be doing?

ESWMB will be carrying out beach clearance work including wire cutting, tidying loose geobag material, cutting back wooden stakes, and clearing debris. They will also be covering the geobags with shingle from in front of the fences to properties north of Old Homes Road to, subject to material availability.

We will work hard to keep any inconvenience to a minimum and ask the public to please take note of the contractor's signage when work is happening.

### Why are we doing this work?

This work will improve public safety and is an important part of ESC's commitment to ensure that the coastal assets the Council is responsible for are working effectively and are safe for the public. This will help to protect our beautiful and important coastline economically, environmentally and for the enjoyment of communities and visitors for generations to come.

Undertaking regular targeted maintenance means that we can maximise the lifespan of coastal protection assets, ensuring that we make the most of every pound spent and achieve a better return on public investment. We are supporting the safeguarding of life and local economies by making sure that the Council's coastal assets are in the condition needed for continued protection.

### Contact us

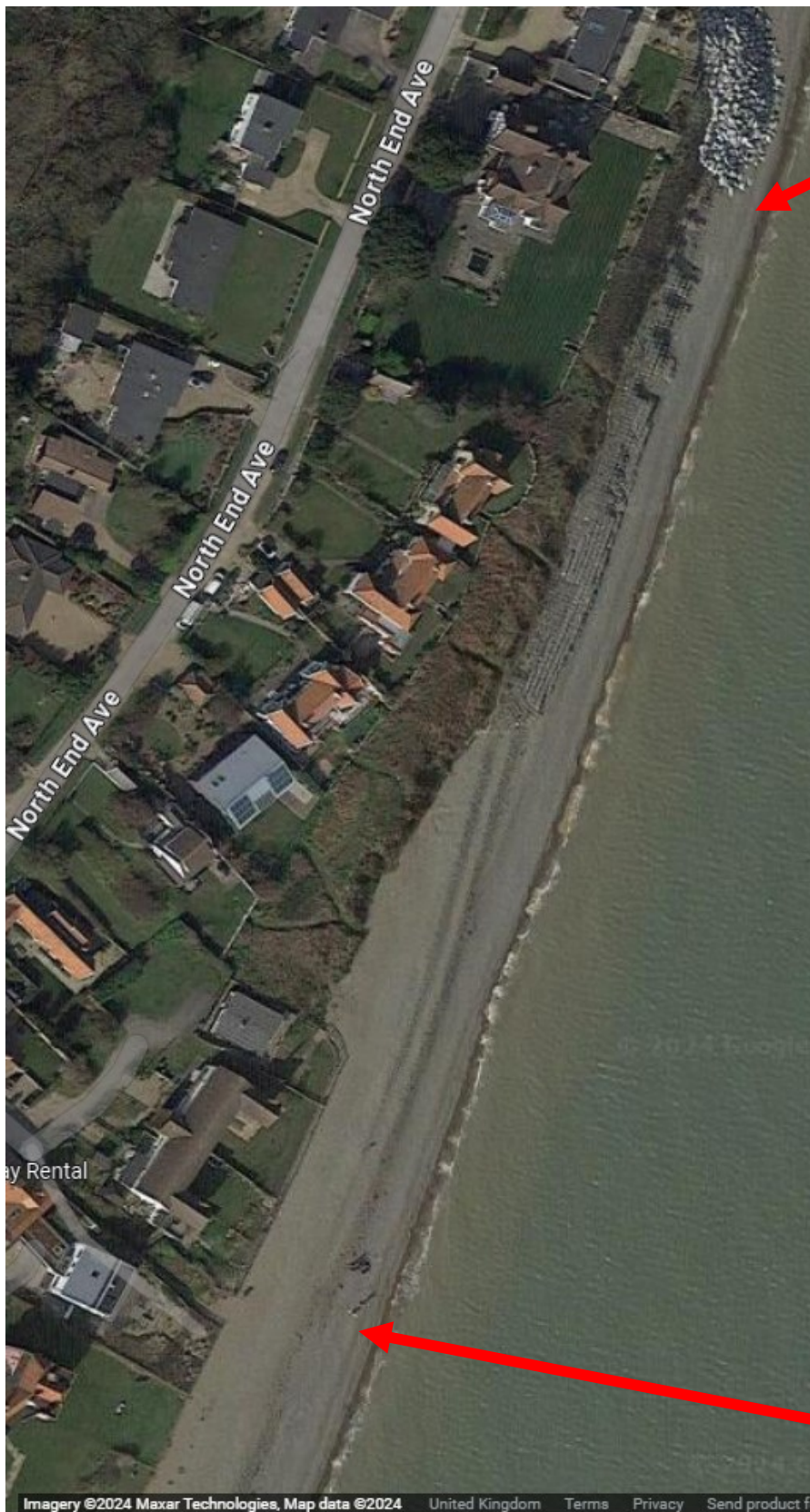
Coastal Management, Riverside, 4 Canning Road, Lowestoft, NR33 0EQ

If you would like this factsheet in another format please let us know by emailing:

[coastalmanagement@eastsoffolk.gov.uk](mailto:coastalmanagement@eastsoffolk.gov.uk)

July 2024

## Thorpeness Maintenance — location map



Northern extent of works

Southern extent of works

Follow us on social media:

 @CPE\_Nands | @EastSuffolk | @The\_WMA

 @CPENands | @EastSuffolkCouncil | @WaterManagementAlliance

 @cpe\_nands | @eastsoffolkcouncil

[www.coasteast.org.uk](http://www.coasteast.org.uk)

[www.eastsuffolk.gov.uk](http://www.eastsuffolk.gov.uk)

[www.wlma.org.uk](http://www.wlma.org.uk)