

Thorpeness Monthly Monitoring Report

Date and Time of Survey: April 12 2024, 08:24

Time of Low Tide: 07:45

Height of Low Tide (m ODN):

Inspector: Thomas Hayden

Monthly inspection of the frontage between Thorpeness village and Ness. The purpose is to check signage, flag any hazards relating to public safety, inspect condition and exposure of defences and monitor geomorphological changes. This report is used to inform coastal management decision making and will be shared with the community. For best access, inspections should be done at low tide with due regard to the weather and sea state.

Southern undefended frontage

Upper Beach Levels: No Change

Lower Beach Levels: Slight Increase

Comments on the Current Beach Levels over the southern UNDEFENDED frontage: Lower beach has lost a small amount of material, leading to a shallower beach profile up to the high tide line. This high tide mark is higher up the beach than has been seen previously, owing to the shallower profile of the lower beach.

Photos of the southern UNDEFENDED frontage:



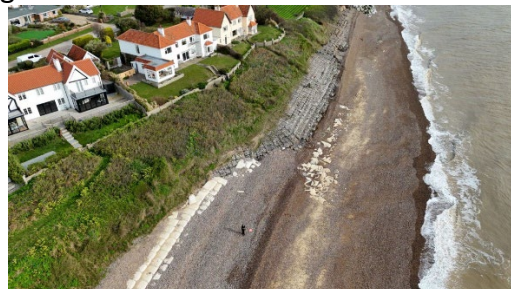
(Central) Defended Frontage

Upper Beach Levels: Slight Increase

Lower Beach Levels: Slight Increase

Comments on the current beach levels over the DEFENDED frontage: Beach levels have built slightly over the defended frontage. This is evidenced from the natural recovering of the defences, as the lower geobags and gabion baskets are now not visible. The high tide mark has moved closer to the base of the defences, meaning that there is a shallower lower beach profile than has been seen previously.

Photos of the Central DEFENDED frontage:



Gabion condition

Comments on gabion condition: Lower gabion baskets have been covered by a build up of material. Upper gabion baskets remain in place with minimal movement.

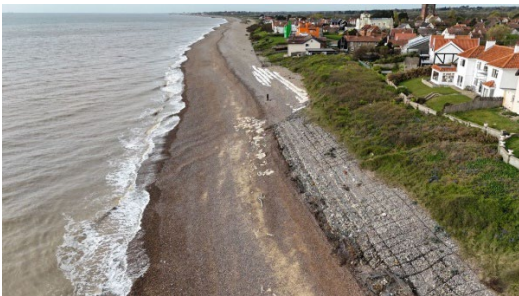
Photos of the gabions:



Phase 1 Geobag condition

Comments on Phase 1 Geobag condition: Phase 1 geobags have been partially recovered naturally. The lower rows of bags are no longer visible. The upper rows of bags remain exposed, however not to the extent that has been seen previously.

Photos of Phase 1 Geobags:



Phase 2 Geobag condition

Comments on Phase 2 Geobag condition: Geobags at the southern end of the gabion field remain partially exposed. However, most of the bags have been covered up by beach material. The defence termination north of the rock has been partially exposed since the last visit.

Photos of Phase 2 Geobags:



Signage condition

Signage condition: Good

All signage remains in place and legible.



Hazards/Debris

Comments on Hazards/Debris: Cliffs immediately north of the rock are overhanging and undercut. However, there has not been the scale of erosion between visits that has been seen previously. Erosion deposits remain at the base of the cliff. Further north the cliffs are more vegetated, indicating that there has been less erosion.

Photos of Hazards/Debris: Examples recorded on inspection below.



Northern UNDEFENDED Frontage:

Upper Beach Levels: Slight increase

Lower Beach Levels: Slight increase.

Comments on the current beach levels, north of defence termination: Lower beach profile has shallowed out and the high tide mark has moved further towards the cliff. This has created a steeper slope up to the high tide line. This means that the upper beach has seen material build up immediately north of the rock. Further north, the beach is growing, so the cliffs are more protected.

Photos of the Northern UNDEFENDED Frontage:

